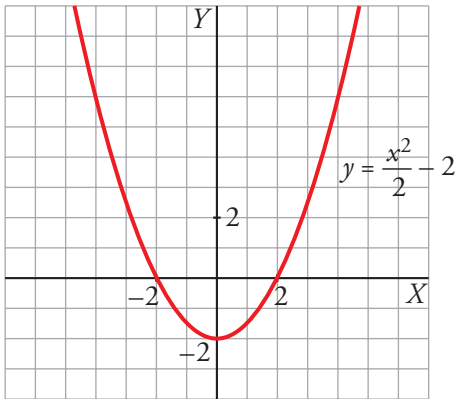
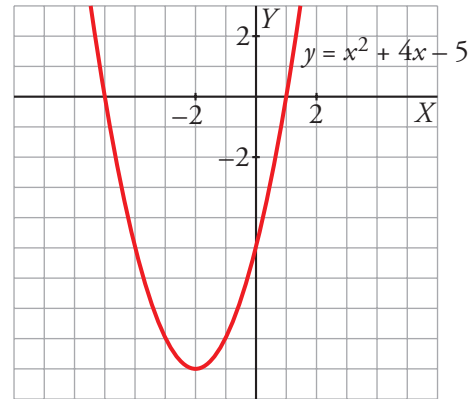


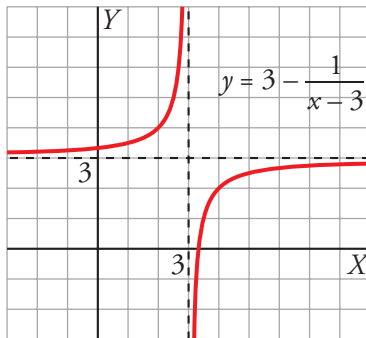
2 a) Vértice en el punto $(0, -2)$



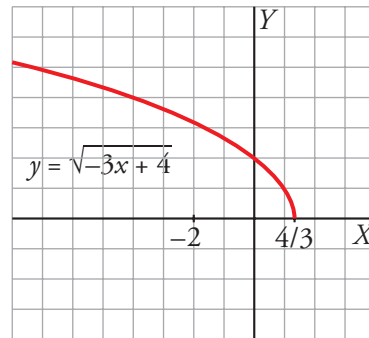
b) Vértice en el punto $(-2, -9)$



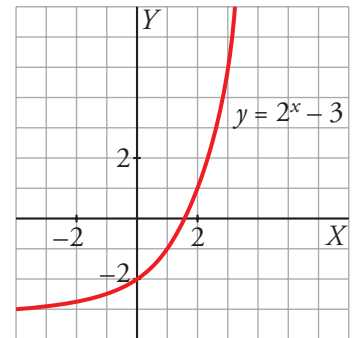
3 a)



b)



c)



4 a) $\log_2 64 = \log_2 2^6 = 6$

b) $\log_2 \frac{1}{16} = \log_2 2^{-4} = -4$

c) $\log_3 27 = \log_3 3^3 = 3$

d) $\log_5 25 = \log_5 5^2 = 2$

5 a) 5 minutos cuestan 1,5 €.

10 minutos cuestan 3 €.

20 minutos cuestan 5 €.

