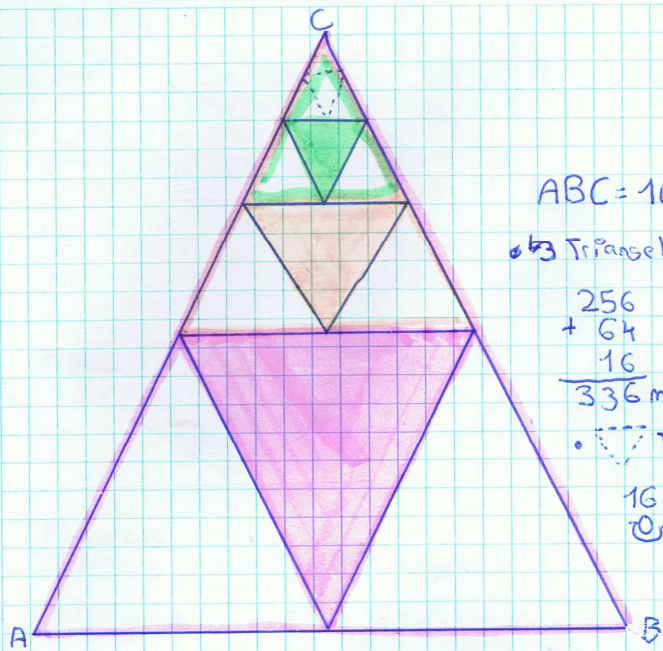


III) TRIANGULATZEN



$$ABC = 1024 \text{ m}^2$$

• 3 Triangeluen batura:

$$\begin{array}{r} 256 \\ + 64 \\ \hline 16 \end{array}$$

$$\underline{336 \text{ m}^2} \quad 3 \text{ Triangeluen batura}$$

• 1 Triangeluaren azalera:

$$\begin{array}{r} 16 \\ \hline 4 \end{array}$$

$$\underline{4 \text{ m}^2} \quad 1 \text{ Triangelua}$$

Pausoak:

1- Triangelu handia 4 Triangelu berdinetan zatitzen dugu, orduan Triangelu baten azalera badakigu:

$$\begin{array}{r} 1024 \\ \hline 22 \quad 256 \text{ m}^2 \quad \text{baten azalera} \\ \hline 24 \\ \hline 4 \end{array}$$

2- 256 m^2 Triangelu bat, 4 Triangelu berdinetan banatu, orduan Triangelu baten azalera badakigu:

$$\begin{array}{r} 256 \\ \hline 16 \quad 64 \text{ m}^2 \quad \text{baten azalera} \\ \hline 4 \end{array}$$

3- 64 m^2 Triangelu bat, 4 Triangelu berdinetan banatu, orduan Triangelu baten azalera badakigu:

$$\begin{array}{r} 64 \\ \hline 24 \quad 16 \text{ m}^2 \quad \text{baten azalera} \\ \hline 4 \end{array}$$

Xabier Unzueta

DBH1-2